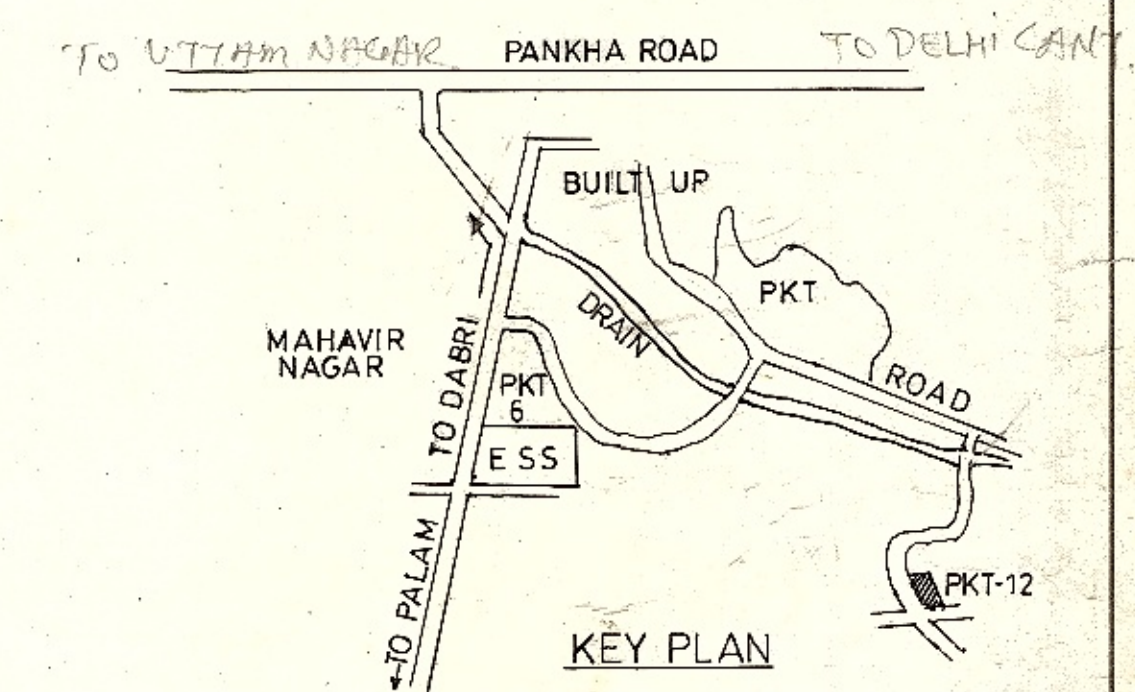


D. D. A.
द्वारका उपशहर परियोजना



AREA STATEMENT

TOTAL AREA OF THE PKT = 708.94 sqm

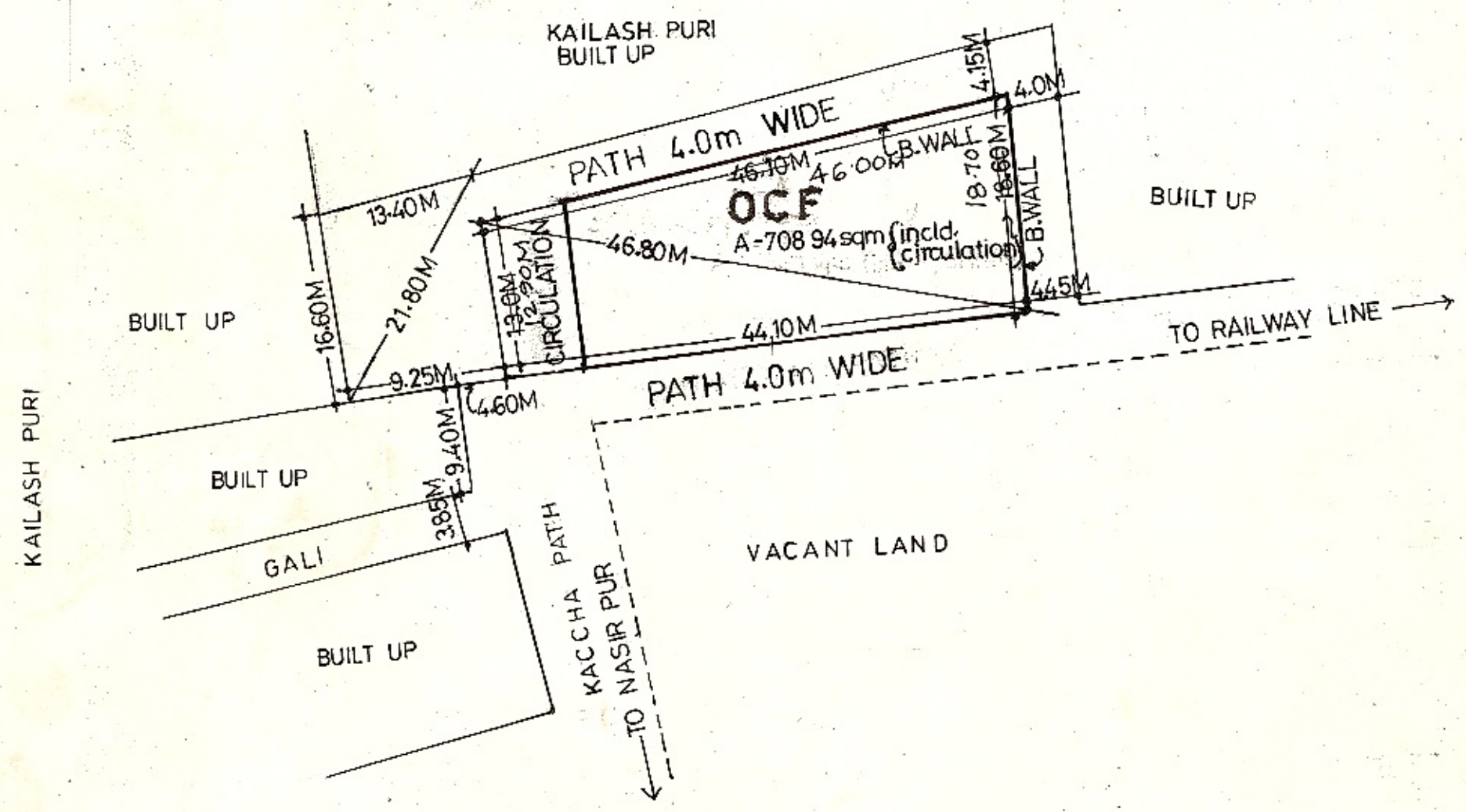
FACILITY PROVIDED:
OCF + CIRCULATION = 708.94 sqm

THE FEASIBILITY REPORT HAS BEEN RECEIVED FOR THE GAON SABHA POCKETS 6, 7, 8, 9, 10, 11 & 12 (NASIRPUR) FROM THE EX. ENGINEER WD-6 VIDE LETTER NO. F1(450) 2005/PLG/DWK/PT II DT. 13.3.06 AND THE SAME HAS BEEN INCORPORATED. THE REPORT HAS BEEN KEPT IN FILE NO. F1(450) 2005/PLG/DWK/PT II ON PAGE NO. 33/C TO 37/C.

NOTE :-

THE LAND IS TAKEN OVER BY THE ENGG WING WD-6 DDA NEW DELHI AND IS FENCED AS INTIMATED VIDE LETTER NO. F1(208) AE(P)/WD-6/DDA/10 DT. 5.1.05.
THIS LAYOUT PLAN HAS BEEN PREPARED ON THE BASIS OF SURVEY SUPPLIED BY SURVEY UNIT DWK DATED 25.2.05.

THE LAYOUT PLAN HAS BEEN APPROVED IN THE 243RD SCREENING COMMITTEE MEETING HELD ON 29.11.2005 VIDE ITEM NO. 103:2005 IN FILE NO. F1(450) 2005/PLG/DWK/PT-II THE SAME HAS BEEN CERTIFIED BY JT.DIR.(PLG) AND VERIFIED BY DY. DIR.(ARCH) COORDN.



**LAYOUT PLAN OF GAON SABHA
PKT NO-12 NASIR PUR
KHASHA NO. 618**

1:500 SCALE		DWK/NASIRPUR/LOP/ PKT-12/JUNE 05 DRG. NO. 750	
PLG. D/MAN	REETA SEHGAL PLG. ASSTT.	MAY 05 DATE	
T. SINGH ASSTT. DIRECTOR	S. DAS JT. DIRECTOR	DR. S. P. BANSAL DIRECTOR (DWK)	
DELHI DEVELOPMENT AUTHORITY			